

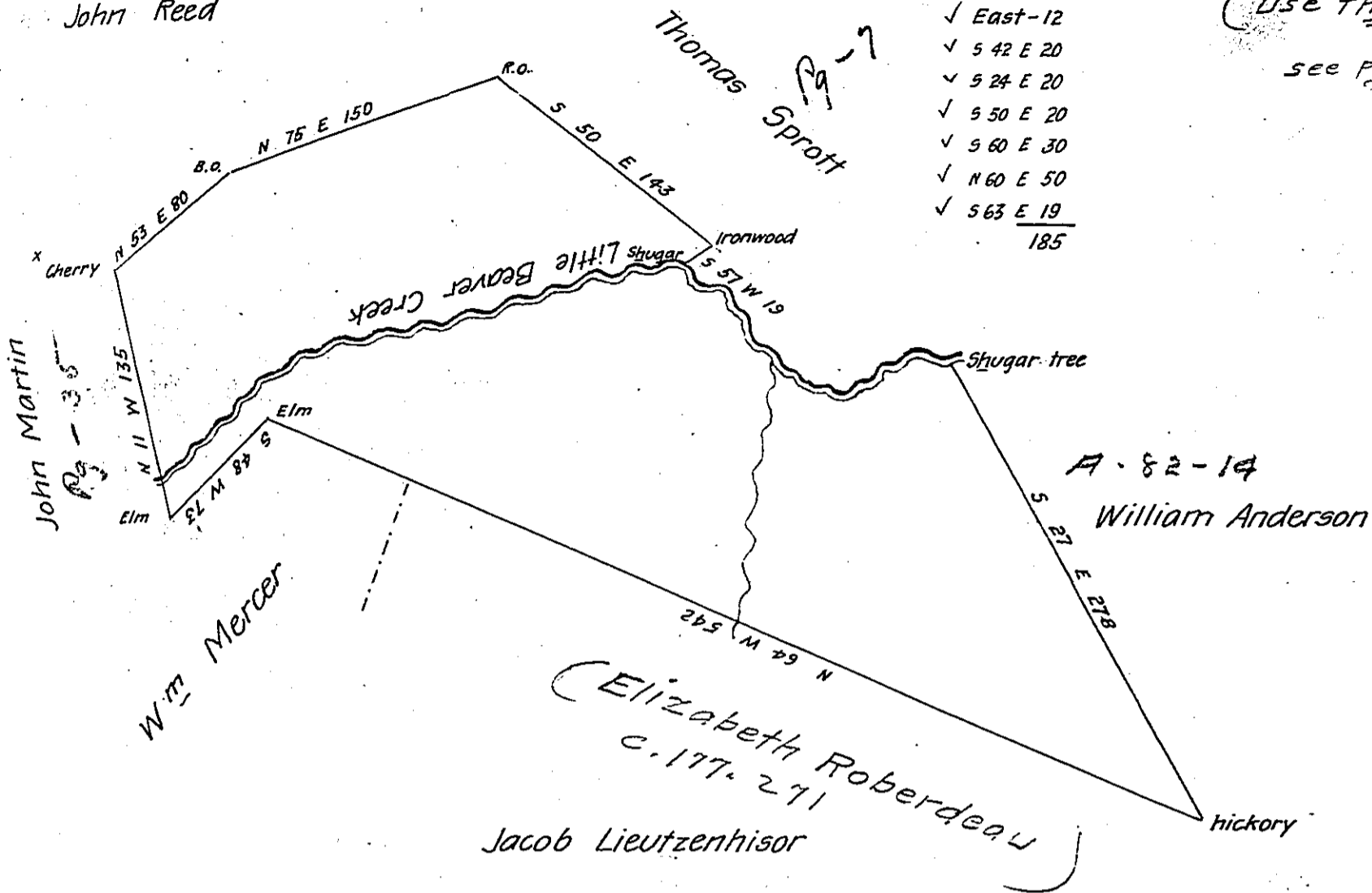
John Reed

Courses & Distances

- Up Creek
- ✓ 5 15 E 14 perches
- ✓ East-12
- ✓ 5 42 E 20
- ✓ 5 24 E 20
- ✓ 5 50 E 20
- ✓ 5 60 E 30
- ✓ N 60 E 50
- ✓ 5 63 E 19
- 185

(Use this.)

see Pg. 141.



The above is a Draft of a Tract of Land Called Peaceable Resurvey^d March 2^d 1801 by an Order of the Board of Property on Acc^t of an Error in the first Survey & in pursuance of a Warrant granted to Hugh & William Martin dated March 30th 1793 Situate in Beaver County & on the East branch of Little Beaver Creek Containing 520 Acres with 6 per Cent Allowance &c.

Ja^s Carothers D.S.

Samuel Cochran Esq^r

S. G.

IN TESTIMONY that the above is a copy of the original remaining on file in the Department of Internal Affairs of Pennsylvania, made conformably to an Act of Assembly approved the 16th day of February, 1833, I have hereunto set my Hand and caused the Seal of said Department to be affixed at Harrisburg, this fifteenth day of February 1906

Isaac R. Brown
Secretary of Internal Affairs.